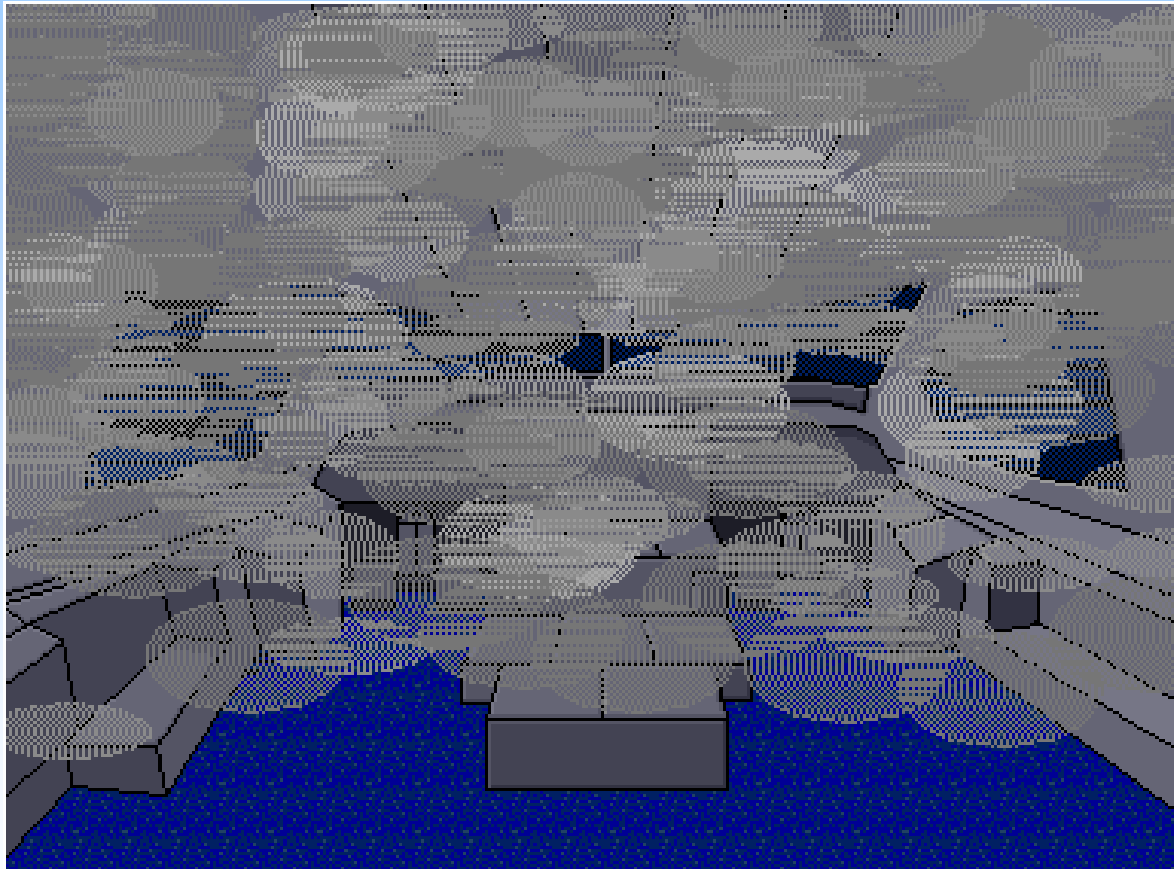


SMOKE



PF

PNF

1.DETECTION

Moderate smoke in the cockpit:

DETECTION

**FLIES THE AIRCRAFT
NAVIGATES**

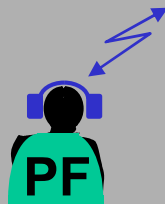
PF

PNF

2. PROCEDURE: FIRST ACTIONS

ORDER.....” SMOKE/FUMES/AVNCS SMOKE ”

SMOKE/FUMES/AVNCS SMOKE.....APPLY



COMMUNICATES

Apply:

APPLY IMMEDIATELY

These actions have to be applied, regardless of the origin of smoke. They might be displayed on the ECAM.

Keep in mind:

- IF DENSE SMOKE, at any time of the procedure:

LAND ASAP

A330 EMERGENCY PROCEDURES REV 22 1.05

APPLY IMMEDIATELY

- VENT EXTRACT OVRD
- CAB FANS OFF
- GALLEYS OFF

IF REQUIRED:

- CREW OXY MASKS ... ON/100% EMERG
- FAULTY EQUIPT (if identified) ... ISOLATE

If DENSE SMOKE, at any time of the procedure:

- DESCENT for smoke removal ... INITIATE
- SMOKE/TOXIC FUMES REMOVAL ... APPLY
- ELEC EMER CONFIG CONSIDER

Refer to the end of the procedure to set ELEC EMER CONFIG.

IF AIR COND SMOKE SUSPECTED:

- APU BLEED OFF
- VENT EXTRACT AUTO
- PACK 1 OFF

If smoke persists:

- PACK 1 ON
- PACK 2 OFF
- CRG FWD ISOL VALVE OFF

If smoke still persists:

- PACK 2 ON
- VENT EXTRACT OVRD
- SMOKE/TOXIC FUMES REMOVAL CONSIDER

A330 EMERGENCY PROCEDURES REV 16 1.06

SMOKE/FUMES/AVNCS SMOKE (CONT'D)

- IF CAB EQUIPMENT SMOKE SUSPECTED:
 - PAX SYS OFF
- IF SMOKE PERSISTS
 - EMER EXIT LT ON
 - COMMERCIAL OFF
 - SMOKE DISSIPATION CHECK
 - FAULTY EQPT SEARCH/ISOLATE
- When faulty equipment confirmed isolated:
 - COMMERCIAL NORM
 - PAX SYS NORM
- SMOKE/FUMES REMOVAL ... CONSIDER
- IF SMOKE SOURCE CANNOT BE DETERMINED AND STILL PERSISTS OR AVNCS/CKPT SMOKE SUSPECTED:
 - AC BUS 1-1 + 1-2 can be shed as follows:
 - ECAM/ND SEL F/O
 - ELEC/AC page SELECT
 - BUS TIE OFF
 - GEN 3+4 CHECK ON
 - AC ESS FEED ALTN
 - GEN 1+2 OFF
 - SMOKE DISSIPATION CHECK
 - AC BUS 2-3 + 2-4 can be shed as follows:
 - BUS TIE CHECK OFF
 - GEN 1+2 ON
 - AC ESS FEED NORM
 - ECAM/ND SEL NORM
 - GEN 3+4 OFF
 - SMOKE DISSIPATION CHECK

PF

PNF

3. PROCEDURE: AIR COND SMOKE

Moderate smoke persists. You suspect AIR COND SMOKE:

SMOKE/FUMES/AVNCS SMOKE.....APPLY



FCOM SMOKE/FUMES/AVNCS SMOKE procedure contains some guidelines to determine smoke origin.

Keep in mind:

- IF DENSE SMOKE, at any time of the procedure:

Apply:

- IF AIR COND SMOKE SUSPECTED:

SMOKE/FUMES/AVNCS SMOKE

EMERGENCY PROCEDURES REV 22 1.05

LAND ASAP

APPLY IMMEDIATELY

- VENT EXTRACT OVRD
- CAB FANS OFF
- GALLEYS OFF

● IF REQUIRED:

- CREW OXY MASKS ... ON/100% EMERG
- FAULTY EQUIPT (if identified) ... ISOLATE

■ If DENSE SMOKE, at any time of the procedure:

- DESCENT for smoke removal ... INITIATE
- SMOKE/TOXIC FUMES REMOVAL ... APPLY
- ELEC EMER CONFIG CONSIDER

Refer to the end of the procedure to set ELEC EMER CONFIG.

■ IF AIR COND SMOKE SUSPECTED:

- APU BLEED OFF
- VENT EXTRACT AUTO
- PACK 1 OFF

● If smoke persists:

- PACK 1 ON
- PACK 2 OFF
- CRG FWD ISOL VALVE OFF

● If smoke still persists:

- PACK 2 ON
- VENT EXTRACT OVRD
- SMOKE/TOXIC FUMES REMOVAL CONSIDER

SMOKE/FUMES/AVNCS SMOKE (CONT'D)

EMERGENCY PROCEDURES REV 16 1.06

■ IF CAB EQUIPMENT SMOKE SUSPECTED:

- PAX SYS OFF

● IF SMOKE PERSISTS

- EMER EXIT LT ON
- COMMERCIAL OFF
- SMOKE DISSIPATION CHECK
- FAULTY EQPT SEARCH/ISOLATE

● When faulty equipment confirmed isolated:

- COMMERCIAL NORM
- PAX SYS NORM
- SMOKE/FUMES REMOVAL CONSIDER

● IF SMOKE SOURCE CANNOT BE DETERMINED AND STILL PERSISTS OR AVNCS/CKPT SMOKE SUSPECTED:

● AC BUS 1-1 + 1-2 can be shed as follows:

- ECAM/ND SEL F/O
- ELEC/AC page SELECT
- BUS TIE OFF
- GEN 3+4 CHECK ON
- AC ESS FEED ALTN
- GEN 1+2 OFF
- SMOKE DISSIPATION CHECK

● AC BUS 2-3 + 2-4 can be shed as follows:

- BUS TIE CHECK OFF
- GEN 1+2 ON
- AC ESS FEED NORM
- ECAM/ND SEL NORM
- GEN 3+4 OFF
- SMOKE DISSIPATION CHECK

PF

PNF

4. PROCEDURE: CABIN EQUIPMENT SMOKE

Moderate smoke persists. You suspect now CABIN EQUIPMENT SMOKE:

SMOKE/FUMES/AVNCS SMOKE.....APPLY



Keep in mind:

● IF DENSE SMOKE, at any time of the procedure:

<p>EMERGENCY PROCEDURES REV 22 1.05 SEG 004</p> <p>NCS SMOKE LAND ASAP</p> <p>VENT EXTRACT OVRD CAB FANS OFF GALLEYS OFF</p> <p>● IF REQUIRED : - CREW OXY MASKS .. ON/100% EMERG - FAULTY EQUIPT (if identified) ISOLATE</p> <p>IF DENSE SMOKE, at any time of the procedure : - DESCENT for smoke removal . . . INITIATE - SMOKE/TOXIC FUMES REMOVAL . . . APPLY - ELEC EMER CONFIG CONSIDER Refer to the end of the procedure to set ELEC EMER CONFIG.</p> <p>● IF AIR COND SMOKE SUSPECTED : - APU BLEED OFF - VENT EXTRACT AUTO - PACK 1 OFF</p> <p>● If smoke persists : - PACK 1 ON - PACK 2 OFF - CRG PWD ISOL VALVE OFF</p> <p>● If smoke still persists : - PACK 2 ON - VENT EXTRACT OVRD - SMOKE/TOXIC FUMES REMOVAL CONSIDER</p>	<p>EMERGENCY PROCEDURES REV 15 1.06 SEG 001</p> <p>SMOKE/FUMES/AVNCS SMOKE (CONT'D)</p> <p>● IF CAB EQUIPMENT SMOKE SUSPECTED : - PAX SYS OFF</p> <p>● IF SMOKE PERSISTS - EMER EXIT LT ON - COMMERCIAL OFF - SMOKE DISSIPATION CHECK - FAULTY EQPT SEARCH/ISOLATE</p> <p>● When faulty equipment confirmed isolated : - COMMERCIAL NORM - PAX SYS NORM - SMOKE/FUMES REMOVAL CONSIDER</p> <p>● IF SMOKE SOURCE CANNOT BE DETERMINED AND STILL PERSISTS OR AVNCS/CKPT SMOKE SUSPECTED : - AC BUS 1-1 + 1-2 can be shed as follows : - ECAM/ND SEL F/O - ELEC/AC page SELECT - BUS TIE OFF - GEN 3+4 CHECK ON - AC ESS FEED ALTN - GEN 1+2 OFF - SMOKE DISSIPATION CHECK</p> <p>● AC BUS 2-3 + 2-4 can be shed as follows : - BUS TIE CHECK OFF - GEN 1+2 ON - AC ESS FEED NORM - ECAM/ND SEL NORM - GEN 3+4 OFF - SMOKE DISSIPATION CHECK</p>
--	---

Apply:

● IF CAB EQUIPMENT SMOKE SUSPECTED:

PF

PNF

5.PROCEDURE : SMOKE SOURCE NOT DETERMINED

Moderate smoke persists. You cannot determine the source

SMOKE/FUMES/AVNCS SMOKE.....APPLY



Keep in mind

● IF DENSE SMOKE, at any time of the procedure:

<p>EMERGENCY PROCEDURES REV 22 1.05</p> <p>S SMOKE</p> <p>LAND ASAP</p> <p>VENT EXTRACT OVRD</p> <p>CAB FANS OFF</p> <p>GALLEYS OFF</p> <p>● IF REQUIRED :</p> <p>- CREW OXY MASKS .. ON/100%/ EMERG</p> <p>- FAULTY EQUIPT (if identified) ISOLATE</p> <p>IF DENSE SMOKE, at any time of the procedure :</p> <p>- DESCENT for smoke removal . . . INITIATE</p> <p>- SMOKE/TOXIC FUMES REMOVAL . . . APPLY</p> <p>- ELEC EMER CONFIG CONSIDER</p> <p>Refer to the end of the procedure to set ELEC EMER CONFIG.</p> <p>● IF AIR COND SMOKE SUSPECTED :</p> <p>- APU BLEED OFF</p> <p>- VENT EXTRACT AUTO</p> <p>- PACK 1 OFF</p> <p>● If smoke persists :</p> <p>- PACK 1 ON</p> <p>- PACK 2 OFF</p> <p>- CRG PWD ISOL VALVE OFF</p> <p>● If smoke still persists :</p> <p>- PACK 2 ON</p> <p>- VENT EXTRACT OVRD</p> <p>- SMOKE/TOXIC FUMES REMOVAL CONSIDER</p>	<p>EMERGENCY PROCEDURES REV 15 1.06</p> <p>SMOKE/FUMES/AVNCS SMOKE (CONT D)</p> <p>● IF CAB EQUIPMENT SMOKE SUSPECTED :</p> <p>- PAX SYS OFF</p> <p>● IF SMOKE PERSISTS</p> <p>- EMER EXIT LT ON</p> <p>- COMMERCIAL OFF</p> <p>- SMOKE DISSIPATION CHECK</p> <p>- FAULTY EQPT SEARCH/ISOLATE</p> <p>● When faulty equipment confirmed isolated :</p> <p>- COMMERCIAL NORM</p> <p>- PAX SYS NORM</p> <p>● IF SMOKE SOURCE CANNOT BE DETERMINED AND STILL PERSISTS OR AVNCS/CKPT SMOKE SUSPECTED :</p> <p>● AC BUS 1-1 + 1-2 can be shed as follows :</p> <p>- ECAM/ND SEL F/O</p> <p>- ELEC/AC page SELECT</p> <p>- BUS TIE OFF</p> <p>- GEN 3+4 CHECK ON</p> <p>- AC ESS FEED ALTN</p> <p>- GEN 1+2 OFF</p> <p>- SMOKE DISSIPATION CHECK</p> <p>● AC BUS 2-3 + 2-4 can be shed as follows :</p> <p>- BUS TIE CHECK OFF</p> <p>- GEN 1+2 ON</p> <p>- AC ESS FEED NORM</p> <p>- ECAM/ND SEL NORM</p> <p>- GEN 3+4 OFF</p> <p>- SMOKE DISSIPATION CHECK</p>
--	--

Apply:

● IF SMOKE SOURCE CANNOT BE DETERMINED AND STILL PERSISTS

Try to isolate left, then right normal AC BUS bars

PF

PNF

6. PROCEDURE: DENSE SMOKE



Smoke is dense, now.

SMOKE/FUMES/AVNCS SMOKE.....APPLY



Apply:

● IF DENSE SMOKE, at any time of the procedure:

SMOKE/TOXIC FUMES REMOVAL



A330 EMERGENCY PROCEDURES REV 19 SEC 001 1.06

SMOKE/FUMES/AVNCS SMOKE (CONT'D)

- IF CAB EQUIPMENT SMOKE SUSPECTED :
 - PAX SYS OFF
 - IF SMOKE PERSISTS
 - EMER EXIT LT ON
 - COMMERCIAL OFF
 - SMOKE DISSIPATION CHECK
 - FAULTY EQPT SEARCH/ISOLATE
 - When faulty equipment confirmed isolated :
 - COMMERCIAL NORM
 - PAX SYS NORM
 - SMOKE/FUMES REMOVAL CONSIDER
- IF SMOKE SOURCE CANNOT BE DETERMINED AND STILL PERSISTS OR AVNCS/CRPT SMOKE SUSPECTED :
 - AC BUS 1-1 + 1-2 can be shed as follows :
 - ECAM/ND SEL F/O
 - ELEC/AC page SELECT
 - BUS TIE OFF
 - GEN 3+4 CHECK ON
 - AC ESS FEED ALTN
 - GEN 1+2 OFF
 - SMOKE DISSIPATION CHECK
 - AC BUS 2-3 + 2-4 can be shed as follows :
 - BUS TIE CHECK OFF
 - GEN 1+2 ON
 - AC ESS FEED NORM
 - ECAM/ND SEL NORM
 - GEN 3+4 OFF
 - SMOKE DISSIPATION CHECK

IF AIR COND SMOKE SUSPECTED :

- APU BLEED OFF
- VENT EXTRACT AUTO
- PACK 1 OFF
- IF smoke persists :
 - PACK 1 ON
 - PACK 2 OFF
 - CRG FWD ISOL VALVE OFF
- IF smoke still persists :
 - PACK 2 ON
 - VENT EXTRACT OVRD
 - SMOKE/TOXIC FUMES REMOVAL CONSIDER

A340 EMERGENCY PROCEDURES REV 19 SEC 001 1.06A

TO SET ELEC EMER CONFIG

- EMER ELEC PWR MAN ON
- WHEN EMER GEN AVAIL
 - GEN 1+4 OFF
 - GEN 2+3 OFF
 - APU GEN OFF
- ELEC [EMER CONFIG]
 - APPLY ECAM PROCEDURE WITHOUT PERFORMING THE GEN RESET.

Apply:

TO SET ELEC EMER CONFIG

Then, apply ECAM ELEC EMER CONFIG procedure.