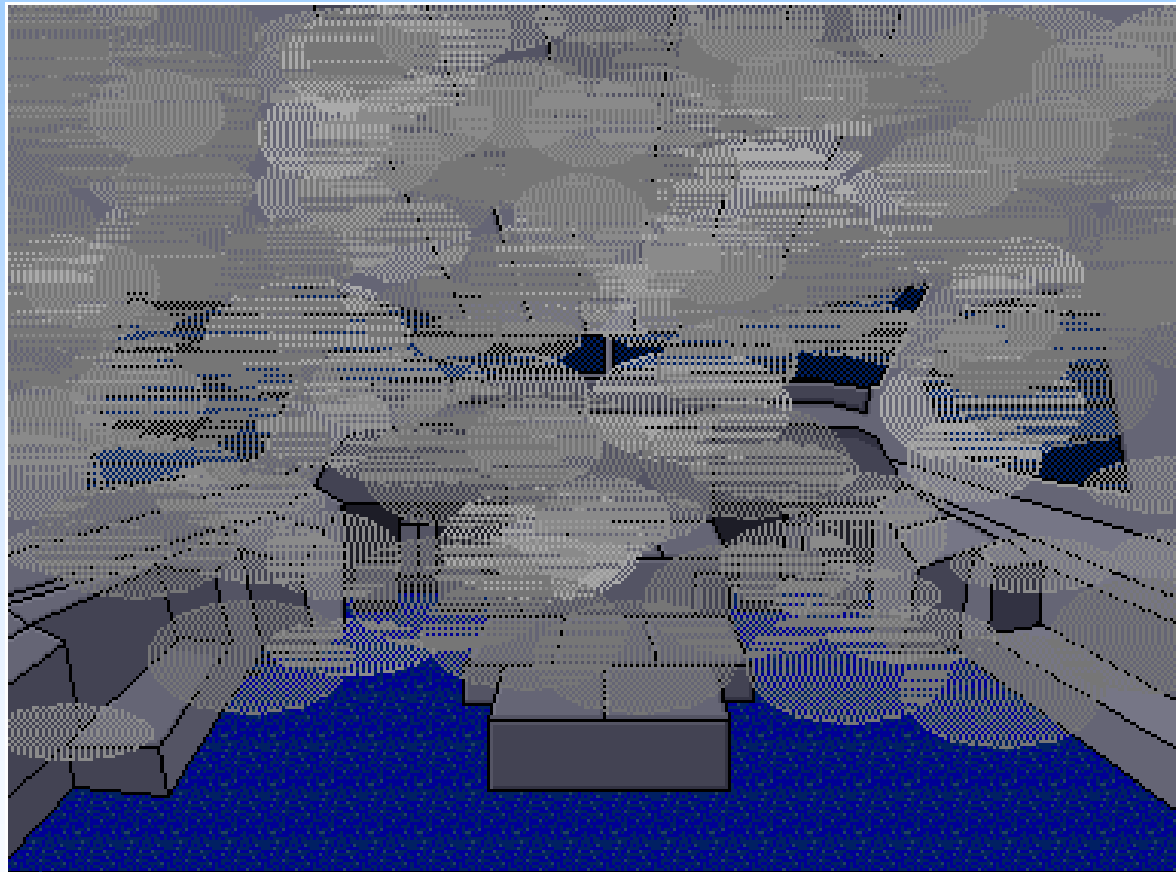


SMOKE



PF

PNF

1.DETECTION

Moderate smoke in the cockpit:

DETECTION

**FLIES THE AIRCRAFT
NAVIGATES**

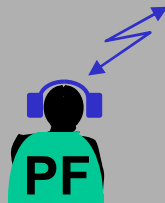
PF

PNF

2.PROCEDURE : FIRST ACTIONS

ORDER.....” SMOKE/FUMES/AVNCS SMOKE ”

SMOKE/FUMES/AVNCS SMOKE.....APPLY



COMMUNICATES

Apply:

IF PERCEPTIBLE SMOKE APPLY IMMEDIATELY

These actions have to be applied, regardless of the origin of smoke. They might be displayed on the ECAM.

Keep in mind:

- IF DENSE SMOKE, at any time of the procedure:

LAND ASAP

EMERGENCY PROCEDURES

SMOKE/FUMES/AVNCS SMOKE

IF PERCEPTIBLE SMOKE:

- OXY MASK/GOGGLE ON
- CAB FANS OFF
- BLOWER OVRD
- EXTRACT OVRD
- GALY & CAB OFF
- SEAT BELTS/NO SMOKING ON
- CKPT/CAB COM ESTABLISH

IF DENSE SMOKE, at any time of the procedure:

- EMER EXIT LT ON
- SMOKE/FUMES REMOVAL APPL
- ELEC EMER CONFIG CONSIDER

IF AIR COND SMOKE SUSPECTED:

- APU BLEED OFF
- BLOWER AUTO
- EXTRACT AUTO
- PACK 1 OFF

IF SMOKE PERSISTS:

- PACK 1 ON
- PACK 2 OFF
- CRG FWD (AFT) ISOL VALVE OFF

IF SMOKE STILL PERSISTS:

- PACK 2 ON
- BLOWER OVRD
- EXTRACT OVRD
- SMOKE/FUMES REMOVAL CONSIDER

SMOKE/FUMES/AVNCS SMOKE (CONT'D)

IF CAB EQUIPMENT SMOKE SUSPECTED:

- If smoke persists:
 - EMER EXIT LIGHT ON
 - BUS TIE OFF
 - GEN 2 OFF
 - SMOKE DISSIPATION CHECK
 - FAULTY EQPT SEARCH/ISOLATE
- When faulty equipment confirmed isolated:
 - GEN 2 ON
 - BUS TIE AUTO
- If faulty equipment not confirmed isolated, before L/G extension:
 - GEN 2 ON
 - BUS TIE AUTO
 - SMOKE/FUMES REMOVAL CONSIDER

IF SMOKE SOURCE CANNOT BE DETERMINED AND STILL PERSISTS OR AVNCS/CKPT SMOKE SUSPECTED:

- AC BUS 1 can be shed as follows:
 - ECAM/ND SEL F/O
 - ELEC/AC page SELECT
 - AC ESS FEED ALTN
 - BUS TIE OFF
 - GEN 2 CHECK ON
 - GEN 1 OFF
 - SMOKE DISSIPATION CHECK

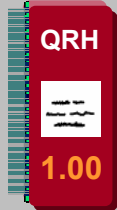
PF

PNF

3.PROCEDURE : AIR COND SMOKE

Moderate smoke persists. You suspect AIR COND SMOKE:

SMOKE/FUMES/AVNCS SMOKE.....APPLY



FCOM SMOKE/FUMES/AVNCS SMOKE procedure contains some guidelines to determine smoke origin.

Keep in mind:

● IF DENSE SMOKE, at any time of the procedure:

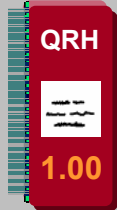
Apply:

■ IF AIR COND SMOKE SUSPECTED:

4.PROCEDURE : CABIN EQUIPMENT SMOKE

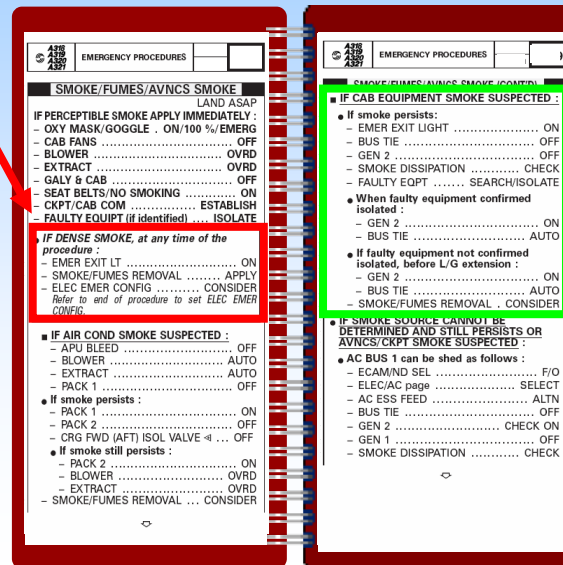
Moderate smoke persist. You suspect now CABIN EQUIPMENT SMOKE:

SMOKE/FUMES/AVNCS SMOKE.....APPLY



Keep in mind:

● IF DENSE SMOKE, at any time of the procedure:



Apply:

● IF CAB EQUIPMENT SMOKE SUSPECTED:

5.PROCEDURE : SMOKE SOURCE NOT DETERMINED

Moderate smoke persists. You cannot determine the source

QRH
1.00

SMOKE/FUMES/AVNCS SMOKE.....APPLY

Keep in mind:

● IF DENSE SMOKE, at any time of the procedure:

■ IF SMOKE SOURCE CANNOT BE DETERMINED AND STILL PERSIST OR...:

EMERGENCY PROCEDURES

SMOKE/FUMES/AVNCS SMOKE
LAND ASAP

IF PERCEPTIBLE SMOKE APPLY IMMEDIATELY :

- OXY MASK/GOGGLE . ON/100 %/EMERG
- CAB FANS OFF
- BLOWER OFF
- EXTRACT OVRD
- GALY & CAB OFF
- SEAT BELTS/NO SMOKING ON
- CKPT/CAB COM ESTABLISH
- FAULTY EQUIPT (if identified) ISOLATE

IF DENSE SMOKE, at any time of the procedure :

- EMER EXIT LT ON
- SMOKE/FUMES REMOVAL APPLY
- ELEC EMER CONFIG CONSIDER

Refer to end of procedure to set ELEC EMER CONFIG.

IF AIR COND SMOKE SUSPECTED :

- APU BLEED OFF
- BLOWER AUTO
- EXTRACT AUTO
- PACK 1 OFF
- PACK 2 OFF
- CRG FWD (AFT) ISOL VALVE OFF

If smoke persists :

- PACK 1 ON
- PACK 2 OFF

If smoke still persists :

- PACK 2 ON
- BLOWER OVRD
- EXTRACT OVRD
- SMOKE/FUMES REMOVAL CONSIDER

EMERGENCY PROCEDURES

SMOKE/FUMES/AVNCS SMOKE (CONT'D)

IF CAB EQUIPMENT SMOKE SUSPECTED :

- If smoke persists:
- EMER EXIT LIGHT ON
- BUS TIE OFF
- GEN 2 OFF
- SMOKE DISSIPATION CHECK
- FAULTY EQPT SEARCH/ISOLATE
- When faulty equipment confirmed isolated :
- GEN 2 ON
- BUS TIE AUTO
- If faulty equipment not confirmed isolated, before L/G extension :
- GEN 2 ON
- BUS TIE AUTO

IF SMOKE SOURCE CANNOT BE DETERMINED AND STILL PERSISTS OR AVNCS/CKPT SMOKE SUSPECTED :

AC BUS 1 can be shed as follows :

- ECAM/ND SEL F/O
- ELEC/AC page SELECT
- AC ESS FEED ALTN
- BUS TIE OFF
- GEN 2 CHECK ON
- GEN 1 OFF
- SMOKE DISSIPATION CHECK

EMERGENCY PROCEDURES

SMOKE/FUMES/AVNCS SMOKE (CONT'D)

AC BUS 2 can be shed as follows :

- BUS TIE CHECK OFF
- GEN 1 ON
- AC ESS FEED NORM
- ECAM/ND SEL NORM
- GEN 2 OFF
- SMOKE DISSIPATION CHECK
- ELEC EMER CONFIG SET

IF SMOKE DISAPPEARS WITHIN 5 MINUTES :

IF AVIONICS SMOKE WARNING STILL PERSISTS AFTER 5 MINUTES :

TO SET ELEC EMER CONFIG :

- EMER ELEC GEN 1 LINE OFF
- EMER ELEC PWR MAN ON

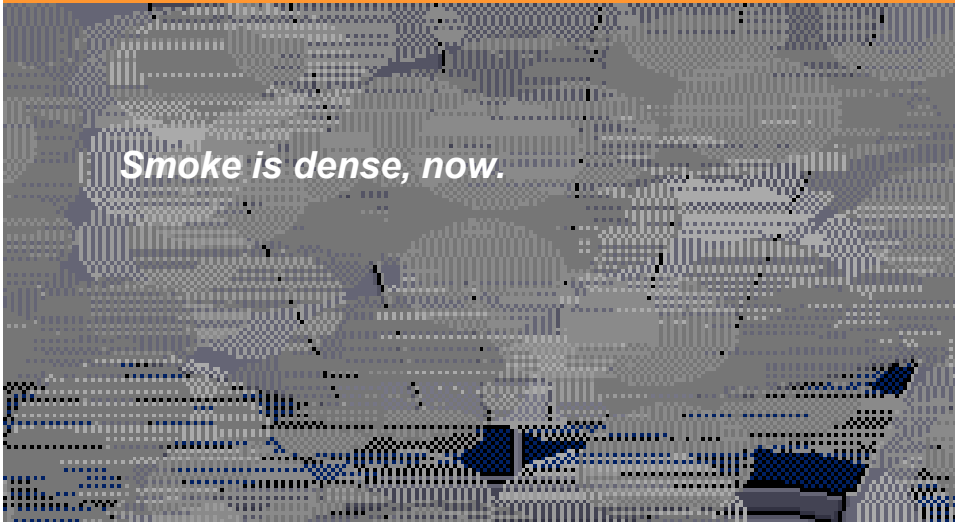
WHEN EMER GEN AVAIL :

- APU GEN OFF
- GEN 2 OFF

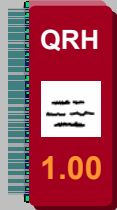
ELEC EMER CONFIG

APPLY ECAM PROCEDURE WITHOUT PERFORMING THE GEN RESET

6.PROCEDURE : DENSE SMOKE



SMOKE/FUMES/AVNCS SMOKE.....APPLY

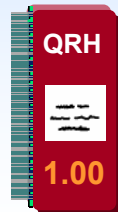


Apply:

● IF DENSE SMOKE, at any time of the procedure:

- EXTRACT OVRD
 - GALY & CAB OFF
 - SEAT BELTS/NO SMOKING ON
 - CKPT/CAB COM ESTABLISH
 - FAULTY EQUIPT (if identified) ISOLATE
- IF DENSE SMOKE, at any time of the procedure :**
- EMER EXIT LT ON
 - SMOKE/FUMES REMOVAL APPLY
 - ELEC EMER CONFIG CONSIDER
- Refer to end of procedure to set ELEC EMER CONFIG.*
- IF AIR COND SMOKE SUSPECTED :**
- APU BLEED OFF
 - BLOWER AUTO
 - EXTRACT AUTO
 - PACK 1 OFF
- If smoke persists :**
- PACK 1 ON
 - PACK 2 OFF
 - CRG FWD (AFT) ISOL VALVE OFF
- If smoke still persists :**
- PACK 2 ON
 - BLOWER OVRD
 - EXTRACT OVRD
 - SMOKE/FUMES REMOVAL CONSIDER

SMOKE/FUMES REMOVAL



Apply:

TO SET ELEC EMER CONFIG

- EMER EXIT LIGHT ON
 - BUS TIE OFF
 - GEN 2 OFF
 - SMOKE DISSIPATION CHECK
 - FAULTY EOPT SEARCH/ISOLATE
- When faulty equipment confirmed isolated :**
- GEN 2 ON
 - BUS TIE AUTO
- If faulty equipment not confirmed isolated, before L/G extension :**
- GEN 2 ON
 - BUS TIE AUTO
 - SMOKE/FUMES REMOVAL CONSIDER
- IF SMOKE SOURCE CANNOT BE DETERMINED AND STILL PERSISTS OR AVNCS/CKPT SMOKE SUSPECTED :**
- AC BUS 1 can be shed as follows :**
- ECAM/ND SEL F/O
 - ELEC/AC page SELECT
 - AC ESS FEED ALTN
 - BUS TIE OFF
 - GEN 2 CHECK ON
 - GEN 1 OFF
 - SMOKE DISSIPATION CHECK
- IF SMOKE DISAPPEARS WITHIN 5 MINUTES :**
- NORMAL VENTILATION RESTORE
- IF AVIONICS SMOKE WARNING STILL REDUCES AFTER 5 MINUTES :**
- TO SET ELEC EMER CONFIG**
- EMER ELEC GEN 1 LINE OFF
 - EMER ELEC PWR MAN ON
- WHEN EMER GEN AVAIL :**
- APU GEN OFF
 - GEN 2 OFF
- ELEC EMER CONFIG**
- APPLY ECAM PROCEDURE WITHOUT PERFORMING THE GEN RESET

Then, apply ECAM ELEC EMER CONFIG procedure.